



Psychoanalytic Psychotherapy Clinic



The University of Dublin

20.11.15-21.02.16  
**TRAUMA**  
BUILT TO BREAK



*The Irish Forum for Psychoanalytic Psychotherapy,  
Science Gallery Dublin's TRAUMA Exhibition, and Psychoanalysis + present*

## **Cinematic Encounters with Violent Trauma and Its Aftermath: A Public Screening and Discussion of *The Act of Killing* (2012)**

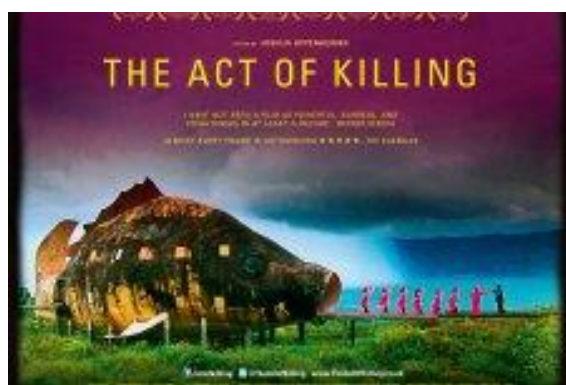


Image © www.dogwoof.com



Image © Science Gallery Dublin

### **Date and Time**

Saturday 20 February 2016 @ 12.00 pm-6.00 pm

### **Venue**

Paccar Theatre, First Floor, Science Gallery, The Naughton Institute, Pearse Street, Trinity College Dublin, Dublin 2.

### **Symposium Description**

Mass violence. Genocide. Pogrom. Human rights abuses. Ethnic cleansing. Holocaust. State-sanctioned terror. These are all terms we associate with acute trauma, and are devastating for the communities who live through them and in their aftermath. We hear reports of mass violence from a multitude of geographical locations with depressing frequency. There are countless stories of people being killed, tortured, raped, beaten and imprisoned in state-sanctioned acts of violence. We see photographs and videos, with increasing regularity, of thousands of people fleeing for their lives to escape from regimes that have made it impossible for them to live safely in their own lands. Perpetrators are labelled monstrous, evil, mad, psychopathic, in an effort to explain why such horrendous events have occurred.

Keeping in mind the theme of Science Gallery Dublin's current exhibition, this symposium takes as its subject, violent TRAUMA and its aftermath, its cinematic representations, and the emotional responses of viewers when watching such representations. The purpose of the event is to help us



Psychoanalytic Psychotherapy Clinic



The University of Dublin

20.11.15-21.02.16  
**TRAUMA**  
BUILT TO BREAK



to think about the impact of trauma, how trauma works psychically and socially, and the possible effects of watching visual representations of trauma. The event also specifically looks at acute trauma arising from the perpetration of violence over an extended period and on a mass scale by political regimes in power in a region when the violence takes place.<sup>1</sup> In a recently-published book on *Everyday Life and the Unconscious Mind*, psychoanalytic psychotherapist Hannah Curtis tells us that 'The word trauma comes from the Greek word "wound". Originally it would have referred to a physical wound but is just as often now thought of as a psychological wound ... It is trauma, large and small, that needs to be remembered in order to be worked through rather than repeated'.<sup>2</sup>

This symposium takes one particular representation of violent trauma as its focus: *The Act of Killing* (2012), a documentary film about mass killings in Indonesia during the 1960s, and their aftermath. This film has been chosen because of its approach to its subject matter and because of its focus on the psychosocial impact of sustained trauma on a mass scale. The directors of the documentary offer the perpetrators of the genocide in Indonesia an opportunity to tell their stories. They take the directors up on their offer but instead of agreeing to be interviewed, they want to 'act' in a film about what they did. It is almost surreal. This film makes for difficult viewing. It is full of people who show no remorse or empathy. They have committed unthinkable acts unthinkingly. It is the audience who are left to wonder about why they did what they did and why they do not appear to feel remorse, regret, or guilt.

This symposium begins with a screening of *The Act of Killing*, followed by short responses by professionals working in the clinical, creative arts, and academic fields of psychoanalysis and psychotherapy, film studies, visual culture, race and ethnicity studies, creative arts practice, curatorship, clinical psychology, forensic psychotherapy, neuropsychology, and horror studies. An interdisciplinary panel of respondents has been invited to come together, to look at this documentary film from their positions of expertise, in an effort to help us to reflect upon the disturbing scenes presented before us. Speakers' responses will be grouped under three headings: (1) The Unconscious Dynamics of Trauma, (2) Living in the Aftermath of Trauma, and (3) The Aesthetics of Representing Trauma. Each respondent will have five minutes in which to make one or two brief points to facilitate us beginning to think about the multi-dimensional aspects and impact of this film. There will be ample time for audience participation during the discussion period.

This symposium hinges on three main questions, though we expect many more will emerge for us throughout the day: (1) What long-term psychological impact does mass violence have on its surviving victims? (2) How does an engagement with victims and perpetrators of mass violence affect those who are involved in such work? (3) How might we reflect on our experience of watching films documenting unsettling, sinister, and upsetting experiences?

---

<sup>1</sup> This symposium is not about the psychological impact of individual acts of violence or violence carried out by small groups of people.

<sup>2</sup> *Everyday Life and the Unconscious Mind: An Introduction to Psychoanalytic Concepts* (London: Karnac 2015), pp. 15, 16.



Psychoanalytic Psychotherapy Clinic



The University of Dublin

20.11.15-21.02.16  
**TRAUMA**  
BUILT TO BREAK



This event will be of interest to people working in the areas of mental health (psychoanalysts, psychotherapists, psychologists, psychiatrists, counsellors, psychiatric nurses), the creative arts, film studies and visual culture, and anyone interested in politically-informed documentaries or international current affairs.

## Warning

Admittance is strictly for persons aged 18 years and older because of *The Act of Killing's* disturbing content. This film contains scenes of, and references to, extreme violence, which viewers might find upsetting. People who have experienced acute trauma may need to reflect on whether to attend this event, given the subject matter of the film. Viewers who have been affected by sexual, physical, emotional or psychological acts of abuse will find a list of support services at the end of this brochure.

## *The Act of Killing* (2012)

Dir. Joshua Oppenheimer; co-dirs. Christine Cynn and Anonymous (Indonesian with English subtitles, 2012; Distributer: Dogwoof).

'I have not seen a film as powerful, surreal, and frightening in at least a decade ... It is unprecedented in the history of cinema' (Werner Herzog).

'When the government of Indonesia was overthrown by the military in 1965, more than one million people were killed in less than a year. Anwar and his friends were promoted from ticket scalpers to death squad leaders, and Anwar killed hundreds of people with his own hands. In *The Act of Killing*, Anwar and his friends agree to tell us the story of the killings. But their idea of being in a movie is not to provide testimony for a documentary: they want to be stars in their favourite film genres – gangster, western, musical. They write the scripts. They play themselves. And they play their victims. *The Act of Killing* is a nightmarish vision – a journey into the memories and imaginations of the unrepentant perpetrators and the shockingly banal regime of corruption and impunity they inhabit' (from the DVD cover).

*The Act of Killing* won multiple international awards upon its release, including best documentary at the BAFTAs, and was critically acclaimed by film critics receiving five stars in many newspapers, including *the Irish Times*, *the Guardian*, *Time Out*, *the Daily Mail*, *the Evening Standard*, *the Financial Times* and *the Sunday Times*. It was voted the best film of 2013 by the British Film Institute's *Sight and Sound* magazine. *The Look of Silence*, a follow-up documentary also directed by Joshua Oppenheimer, was released in 2014, also to critical acclaim.

## TRAUMA Exhibition

This event is organised in association with Science Gallery Dublin's TRAUMA exhibition, which runs from 20 November 2015 to 21 February 2016. How does TRAUMA affect the brain, the body, the



Psychoanalytic Psychotherapy Clinic



The University of Dublin

20.11.15-21.02.16  
**TRAUMA**  
BUILT TO BREAK



national psyche, or all three? How do buildings, bodies, artworks and stories record the TRAUMAS of our past? How do we bounce back after a TRAUMA, and how is our understanding of TRAUMA'S lasting effect changing? TRAUMA is a free exhibition at the boundary of rupture and recovery. Further details: <https://dublin.sciencegallery.com/trauma/> *The Irish Forum for Psychoanalytic Psychotherapy (IFPP) is grateful to Science Gallery Dublin for welcoming our participation in this exhibition, and to Janet Healy, Convener of the IFPP's Trauma Working Group, for her work in initiating, developing and facilitating this collaboration between the two partners.*

## Symposium Schedule

**12 pm-12.15 pm** Registration

*Paccar Theatre, First Floor*

**12.15 pm-12.30pm** Welcome and Opening Remarks, by **Noreen Giffney**

*Paccar Theatre, First Floor*

**12.30 pm-2.30 pm** Screening of *The Act of Killing*

*Paccar Theatre, First Floor*

**2.30 pm-3.15 pm** Light Lunch (additional €5, to be paid upon registering online)

*Deloitte Gallery, First Floor*

**3.15 pm-4.15 pm** Responses (5 mins each) to *The Act of Killing*, chaired by **Tina Kinsella**

*Paccar Theatre, First Floor*

*(1) The Unconscious Dynamics of Trauma*

**Noreen Giffney**

**Olga Cox Cameron**

**Paul Moore**

*(2) Living in the Aftermath of Trauma*

**Joanna Fortune**

**Kevin Murphy**

**Eve Watson**

**Mary Fakher-Eldin**

*(3) The Aesthetics of Representing Trauma*

**Janet Healy**

**Gavin Wilkinson**

**Jacinta Lynch**

**4.15 pm-4.45 pm** Tea and Coffee Break

*Deloitte Gallery, First Floor*

**4.45 pm-5.45 pm** Discussion, facilitated by **Ann Murphy**

*Paccar Theatre, First Floor*

**5.45-6.00 pm** Thanks and Closing Remarks, by **Noreen Giffney**

*Paccar Theatre, First Floor*



Psychoanalytic Psychotherapy Clinic



The University of Dublin

20.11.15-21.02.16  
**TRAUMA**  
BUILT TO BREAK



## Symposium Speakers

**Dr Olga Cox Cameron** is a psychoanalyst in private practice in Dublin for the past twenty-seven years. She lectured for over two decades on psychoanalytic theory and psychoanalysis and literature at St Vincent's University Hospital, and has published articles on these topics in national and international journals. She is the founder of the Irish Psychoanalytic Film Festival, which has recently celebrated its seventh year. **Web:** [www.appi.ie/news-events/events/film-festival](http://www.appi.ie/news-events/events/film-festival)

**Ms Mary Fakher-Eldin** holds a Masters degree in Oriental and African History from the School of Oriental and African History (SOAS), University of London. She taught in the Women's Education, Research and Resource Centre (WERRC) and in the Adult Education Centre at University College Dublin for many years, on women's studies and feminism, and on the Israeli-Palestinian conflict. She also has personal experience of the conflict having lived in the Middle East for many years.

**Ms Joanna Fortune** is a clinical psychotherapist specialising in child and adolescent Psychotherapy with over fifteen years' experience working with children and families. She founded Solamh Parent Child Relationship Clinic in 2010. She is a supervisor with Play Therapy Ireland/UK for over eight years. Joanna is a certified Theraplay Therapist and Trainer as well as a Theraplay Supervisor with the World Theraplay Institute. She is a Child Attachment Specialist. She has completed additional trainings in all areas of Attachment disorder, including Story Stem Assessment Profiling, Child Attachment Interview and Mentalisation Based Therapy (MBT) (with the Anna Freud Centre London). Joanna also does a lot of peri-natal psychotherapy work having completed a clinical rotation in Holles Street National Maternity Hospital. Joanna has worked in the NGO sector in Ireland for twelve years (with charities including ISPCC/CARI/Bray Women's Refuge/To Russia With Love) at frontline and senior management levels specialising in a range of challenging issues. She was on the advisory board of the National Network of Women's Refuges and Support Agencies, now SAFE Ireland, and the National Domestic Violence Intervention Agency. She is on the Board of Directors of Women's Aid, and was also on the Board of 'To Children with Love in Moscow', as well as a founding Board member of the Women's Therapy Centre in Dublin. **Web:** [www.solamh.com](http://www.solamh.com)

**Dr Noreen Giffney** works as a psychoanalytic psychotherapist in private practice. She was previously Lecturer in Psychoanalytic Studies in the Department of Psychosocial Studies at Birkbeck, University of London. She has published extensively on gender and sexuality studies, cultural studies, and psychoanalysis. She is particularly interested in how non-clinical texts (primarily films but also visual art) can be used for a clinical purpose: to facilitate clinical practitioners becoming more receptive and self-reflective in our clinical work, and to help us to hone our therapeutic skills. She is writing a monograph on this subject entitled *Film: In Session, or using non-clinical texts to develop clinical insight in psychoanalysis and psychotherapy*. She currently convenes Psychoanalysis +, a series of interdisciplinary events that bring clinical psychoanalysis together with the creative arts and academic research disciplines. She is the organiser of this event. **Web:** [www.psychoanalyticpsychotherapyclinic.ie](http://www.psychoanalyticpsychotherapyclinic.ie)

**Ms Janet Healy** is currently working towards her Clinical Diploma having recently completed a four-year postgraduate training programme in Psychoanalytic Psychotherapy at the Department of Psychiatry, Trinity College Dublin and the Irish Institute of Psychoanalytic Psychotherapy. In



Psychoanalytic Psychotherapy Clinic



Trinity  
College  
Dublin

The University of Dublin

20.11.15-21.02.16  
**TRAUMA**  
BUILT TO BREAK



In addition to her clinical work with adults at the Dublin Psychoanalytic Clinic, Janet is a member of the Education Sub-committee of the Irish Forum for Psychoanalytic Psychotherapy, and also works with Extern Ireland where she provides intensive one-to-one support for young people and families with complex needs. In addition to her training and interest in psychoanalytic psychotherapy, Janet has completed an MA in Education and an MA in Visual Arts Practices. Previous experience includes working within the realms of arts administration, gallery education, and visual arts curation where her primary interests lay in exploring the role of the curator as cultural broker within communities of place and/or interest. She is the convener of the IFPP's Trauma Working Group, and the curator of Optical Kink.

**Dr Tina Kinsella** is a Research Fellow at the Centre for Gender and Women's Studies, Trinity College Dublin, a researcher at the Graduate School of Creative Arts and Media (GradCAM) and a lecturer in Visual Culture and Critical Theory in the National College of Art and Design (NCAD) and Dublin Institute of Technology. Her research is transdisciplinary, instituting conversations between philosophy, psychoanalysis, visual culture, contemporary art practice and performance to explore the intersection of subjectivity, aesthetics and ethics so as to interrogate the performative politics of the body. Recent publications include a catalogue essay commissioned for the 14th Istanbul Biennial, 'Sundering the Spell of Visibility: Bracha L. Ettinger, Abstract-Becoming-Figural, Thought-Becoming-Form' in *And My Heart Wound Space Within Me* (Leeds: Wild Pansy Press, University of Leeds), and 'Sticky Mothers—From Crypt to Transcrypt' in *Iñtèrkùltùràlnòst/Interculturality Journal*. Forthcoming publications include 'Liquidities: Transactive Borderspaces and Threshold Structures (Between the Harbour and the Sea)' in *Performance Research Journal*, and 'The Problematics of the Erotic: Negotiating Between Private Intimacy and Public Exposure in Artistic Performance' in *Performing Ireland Journal*. **Web:** <https://tinakinsella.wordpress.com/>

**Ms Jacinta Lynch** is a Graduate of the University of Ulster, Belfast Fine Arts BA and MFA. She worked in London with the international designer and architect, Ron Arad, and moved to Milan to work with the Italian design company Fornasetti. On returning to Ireland she studied 16mm Film production at Filmbase. She is the Founding Director of Broadstone Studios in Dublin since 1997, a visual artist studio workspace for professional visual artists. She has developed and co-produced numerous independent art projects with visual artists working in film, sculpture, painting and installation for presentation in the studios exhibition programme. She is presently working with visual artist Kevin Gaffney as Co-producer for a Sky Arts awarded film project due for exhibition in 2016. **Web:** [www.broadstonestudios.com](http://www.broadstonestudios.com)

**Mr Paul Moore** is a psychologist, psychoanalyst and psychotherapist working in private practice in Dublin, Kilkenny and Carlow. He is a Lecturer on the MPhil in Psychoanalytic Studies and the MSc in Psychoanalytic Psychotherapy at Trinity College Dublin. His main area of interest is the intersection of neuroscience and clinical psychoanalytic practice, known as neuropsychanalysis, with a particular interest in the dreaming mind/brain. He also has an interest in neuroscientific and psychoanalytic approaches to autistic spectrum disorder. He is currently undertaking research in association with Headway Ireland and Professor Oliver Turnbull of the School of Psychology at Bangor University as part of his PhD studies and a wider research programme to develop effective psychological therapies for people with an acquired brain injury. This research is also attempting





Psychoanalytic Psychotherapy Clinic



The University of Dublin

20.11.15-21.02.16  
**TRAUMA**  
BUILT TO BREAK



to identify the neural correlates of mental processes which occur in psychotherapy, and in particular psychoanalytic psychotherapy. He is the current Chair of the Irish Institute for Psychoanalytic Psychotherapy (IIPP). **Web:** [www.anamclinic.com](http://www.anamclinic.com)

**Ms Ann Murphy** is a clinical psychologist, psychoanalytic psychotherapist and visual artist. A Clinical Lecturer in Psychiatry at Trinity College Dublin, she was a founder and Director of the MSc in Psychoanalytic Psychotherapy at Trinity College Dublin, where she continues as a lecturer, training analyst and clinical supervisor. She also lectures at St Vincent's University Hospital, and delivers continuing professional development training in Dublin and at other venues throughout Ireland. She has a private practice in Dublin. She is a former Chairperson of the Irish Forum for Psychoanalytic Psychotherapy (IFPP).

**Mr Kevin Murphy** is a psychoanalytic psychotherapist in private practice in Dublin, and he also practices in one of the State prisons. He has lectured in forensic psychotherapy at Independent College Dublin. He is a registered practitioner with the Association for Psychoanalysis and Psychotherapy in Ireland (APPI), a graduate member of the Psychological Society of Ireland (PSI), an associate member of the Irish Psycho-Analytic Association (IPAA) and a member of the US-based Affiliated Psychoanalytic Workgroups (APW). He is currently working on a PhD in the area of asexuality and has spoken on the subject at numerous international conferences.

**Dr Eve Watson** is a psychoanalytic practitioner working in a Dublin city centre practice. She has also been lecturing for the last eleven years in psychoanalysis and psychotherapy. Published in the areas of psychoanalysis, critical psychology, sexuality studies, poetics, film and critical theory, she is currently co-editing a book with Dr Noreen Giffney entitled *Clinical Encounters in Sexuality* and has several book chapters forthcoming in 2016. She is a registered practitioner member of the Association for Psychoanalysis and Psychotherapy in Ireland (APPI), an associate member of the Irish Group Analytic Society (IGAS), a member of the American-based Affiliated Psychoanalytic Workgroups (APW), and is currently on the editorial board of *Lacunae: The International Journal of Psychoanalysis*. She co-organises conferences and events, such as the annual Irish Psychoanalytic Film Festival, which had its seventh running on 29-30 January 2016. **Web:** [www.leesonanalytic.com](http://www.leesonanalytic.com), [www.appi.ie](http://www.appi.ie)

**Mr Gavin Wilkinson** is an Associate Tutor in Film Studies at University College Dublin. He completed his undergraduate degree in psychology in Dublin Business School in 2007, before achieving an MA in Psychoanalytic Psychotherapy in 2010. Following this, Gavin obtained an MA in Gender, Sexuality and Culture from University College Dublin in 2012. His research interests include the spectatorship of horror film, theories of sexuality, and celebrity culture. Gavin has published work in *The Irish Journal of Gothic and Horror Studies* and *Celebrity Studies*.

## Refreshments

Tea and coffee will be available during the break at 4.15 pm-4.45 pm. There will be an option available upon registration online, which includes lunch for an additional €5, on Science Gallery Dublin's events page. Delegates can also purchase additional food items from Science Gallery's



Psychoanalytic Psychotherapy Clinic



Trinity  
College  
Dublin

The University of Dublin

20.11.15-21.02.16  
**TRAUMA**  
BUILT TO BREAK



Café (<https://dublin.sciencegallery.com/cafe>). In addition, there are a number of eateries in the area surrounding Pearse Street.

## Recommended Reading and Viewing

There is no preparation required for attendance at this event.

Delegates who would like to read something brief about psychoanalysis in advance might read one or two of the essays in the digital catalogue for the *Psychoanalysis: The Unconscious in Everyday Life* exhibition at the Science Gallery London in 2010-2011. The catalogue is available online and is free to download.

([www.beyondthecouch.org.uk/digital-catalogue](http://www.beyondthecouch.org.uk/digital-catalogue))

The Freud Museum in London has recently produced a series of four short films offering answers to the question: What Is Psychoanalysis?

([www.freud.org.uk/education/topic/76249/what-is-psychoanalysis-is-it-weird](http://www.freud.org.uk/education/topic/76249/what-is-psychoanalysis-is-it-weird))

## CPD Points (for clinical practitioners)

The Psychoanalytic Section of the Irish Council for Psychotherapy (ICP) has awarded **5 Continuing Professional Development (CPD) points** for this event.

## Getting to the Venue

Science Gallery Dublin is located in Dublin's City Centre. It is easily accessed on foot and is served by all the major modes of transport. The venue is wheelchair accessible.

Map: [https://dublin.sciencegallery.com/find\\_us](https://dublin.sciencegallery.com/find_us)

Driving: Car parks within walking distance (c. 20 mins) of the venue include: Fleet Street Car Park in Temple Bar ([www.parkrite.ie](http://www.parkrite.ie)), Setanta Car Park on Setanta Place ([www.q-park.ie](http://www.q-park.ie)), and Stephen's Green Shopping Centre Car Park at the top of Grafton Street ([www.q-park.ie](http://www.q-park.ie)).

Rail: DART and suburban train services stop at Pearse Street Station: [www.irishrail.ie](http://www.irishrail.ie)

Bus: 44, 61 to Pearse St Station or 1, 44, 47, 56a, 61, 77A to Sandwith St: [www.dublinbus.ie](http://www.dublinbus.ie)

Bicycle: The nearest Dublin Bike station is outside on Pearse Street: [www.dublinbikes.ie](http://www.dublinbikes.ie)

On Foot: Pearse Street entrance of Trinity College Dublin, around the corner from Pearse Street Station.





Psychoanalytic Psychotherapy Clinic



The University of Dublin

20.11.15-21.02.16  
**TRAUMA**  
BUILT TO BREAK



## Event Organisation

This event is organised by Dr Noreen Giffney. The event is organised in association with the IFPP's Trauma Working Group, the Irish Forum for Psychoanalytic Psychotherapy (IFPP), and Science Gallery Dublin.

## IFPP's Trauma Working Group

The members of the IFPP's Trauma Working Group are Joanna Fortune, Dr Noreen Giffney, Janet Healy (Convener) and Paul Moore. They are all members of the Irish Forum for Psychoanalytic Psychotherapy (IFPP). This event forms part of a series of events, contributed to by members of the IFPP's Trauma Working Group, in response to Science Gallery Dublin's Trauma Exhibition. A number of related events, 'Trauma after Dark: A Trilogy of Psychoanalytic Conversations on Trauma', organised by Janet Healy, took place in Science Gallery Dublin during January and February 2016: (1) Reading Trauma: A Psychoanalytic Reading Group, (2) Trauma and the Child, and (3) Acquired Brain Injury and the Emerging Field of Neuropsychanalysis.

## Sponsors

This event is sponsored by three partners:

### Irish Forum for Psychoanalytic Psychotherapy

The Irish Forum for Psychoanalytic Psychotherapy was founded in 1986 to provide a focus for people with an interest in advancing the study and practice of psychoanalytic psychotherapy within Ireland. The Forum is one of the accrediting bodies in Ireland for psychoanalytic practitioners working with adults, and is a member of the Psychoanalytic Section of the Irish Council for Psychotherapy (ICP). The standards of training and practice required for membership (comprising a minimum of seven years study, with a qualification in psychoanalysis, psychoanalytic psychotherapy, or analytical psychology), are in line with the requirements of the European Association of Psychotherapy, and all members hold, or are eligible for the European Certificate of Psychotherapy). In addition to functioning as an accrediting body, the Forum convenes clinical conferences, seminars and workshops for the purpose of continuing professional development. These events are delivered and attended by psychoanalytic psychotherapists, psychologists, psychiatrists, and psychotherapists and counsellors from other modalities. The Forum's members provide psychoanalytic psychotherapy, as well as clinical supervision to trainees and fully-accredited professionals. The Forum aims: 1) to inform the public about psychoanalytic psychotherapy in order to bring it within the reach of a broader section of the community; 2) to promote psychoanalytic psychotherapy in mental health and other settings so that the work of those involved in related areas such as social workers, psychiatrists, psychologists, care workers and teachers can be informed by psychoanalytic understandings of the human condition; 3) to set and maintain ethical, academic and training requirements for the organization so that all levels of membership of the IFPP meet the expected international standards of professional competence; 4) to encourage debate and discussion among psychoanalytic psychotherapy practitioners, thus promoting the professional skills and development of the membership. **Web:** [www.ifpp.ie](http://www.ifpp.ie)



Psychoanalytic Psychotherapy Clinic



Trinity  
College  
Dublin

The University of Dublin

20.11.15-21.02.16  
**TRAUMA**  
BUILT TO BREAK



## Science Gallery Dublin

Science Gallery is a world first. A new type of venue where today's white-hot scientific issues are thrashed out and you can have your say. A place where ideas meet and opinions collide. We're all about opening science up to passionate debate and want your opinion. In 2008, a car park in a forgotten corner of Dublin was transformed into a living experiment that would bridge art and science, unleashing their combined creative potential. Through a cutting-edge programme that ignites creativity and discovery where science and art collide, Science Gallery Dublin encourages young people to learn through their interests. Since opening in 2008, over 1.9 million visitors to the gallery have experienced 34 unique exhibitions – ranging from living art experiments to materials science and from the future of the human race to the future of play. Science Gallery Dublin develops an ever-changing programme of exhibitions and events fuelled by the expertise of scientists, researchers, students, artists, designers, inventors, creative thinkers and entrepreneurs. The focus is on providing programmes and experiences that allow visitors to participate and facilitate social connections, always providing an element of surprise. Science Gallery Dublin is kindly supported by the Wellcome Trust as founding partner, and by 'Science Circle' members – Deloitte, ESB, Google, ICON, NTR Foundation, and Pfizer. Science Gallery Dublin receives support from financial partner Bank of Ireland, Intel Ireland as education partner and programme partner The Marker Hotel. It also receives government support from the Department of Arts, Heritage and Gaeltacht and Science Foundation Ireland, and from the European Seventh Framework Programme. Science Gallery Dublin's media partner is *The Irish Times*.

**Web:** <https://dublin.sciencegallery.com/>

## Psychoanalysis +

Psychoanalysis + is an initiative founded and developed by psychoanalytic psychotherapist and academic researcher Dr Noreen Giffney. It foregrounds psychoanalysis as a clinical practice and a theoretical tool for understanding culture, society and politics. Psychoanalysis + brings together individuals interested in clinical, theoretical and artistic approaches to, and applications of, psychoanalysis. Psychoanalysis + points to the collaborative and interdisciplinary nature of activities and events forming part of the initiative. Psychoanalysis exists in an interdependent and mutually enriching relationship with the cultures and societies within which we as clinical and theoretical practitioners find ourselves. The '+' in the title gestures towards the fact that psychoanalysis is always more than itself. In other words, psychoanalytic practitioners have always drawn on and incorporated insights from other clinical and non-clinical fields into our work, for example, literature, psychiatry, music, neuroscience, art, psychology, mathematics, medicine, philosophy, nursing, classics, social work, film and so on. The space between 'psychoanalysis' and '+' also recognises the gap needed for productive things to happen which cannot be known in advance. The '+' also symbolises an openness to new possibilities and collaborations, so ***please get in touch if you have ideas for events and/or interested in co-organising something as part of the series.*** Email: [noreen.giffney@gmail.com](mailto:noreen.giffney@gmail.com)

**Web:** [www.psychoanalyticpsychotherapyclinic.ie/psychoanalysis](http://www.psychoanalyticpsychotherapyclinic.ie/psychoanalysis)



Psychoanalytic Psychotherapy Clinic



Trinity  
College  
Dublin

The University of Dublin

20.11.15-21.02.16  
**TRAUMA**  
BUILT TO BREAK



## Podcasting

Podcasting is by Mike Liffey at Real Smart Media: <http://realsmartmedia.ie/>

## Acknowledgements

I am grateful for the support of the Trauma Working Group's Convener, Janet Healy, who has done so much to initiate, develop and facilitate this collaboration with Science Gallery Dublin. I also appreciate the financial support of the Irish Forum for Psychoanalytic Psychotherapy ([www.ifpp.ie](http://www.ifpp.ie)) and the Irish Institute of Psychoanalytic Psychotherapy ([www.iipp.ie](http://www.iipp.ie)). My thanks to Science Gallery Dublin for facilitating this event taking place, particularly Dr Shaun O'Boyle for his enthusiastic response to our initial proposal, and to Events Programmer Emma Hannon, Events Assistant Colin Fives, Events Programmer Catriona Buggle, Events Assistant Áine Courtney, and Technical Manager Derek Williams for their work in seeing the proposal through to the staging of the symposium. My thanks to the invited speakers who have all given freely of their time and expertise (Olga Cox Cameron, Mary Fakher-Eldin, Joanna Fortune, Janet Healy, Tina Kinsella, Jacinta Lynch, Paul Moore, Ann Murphy, Kevin Murphy, Eve Watson, Gavin Wilkinson), and to Mike Liffey from Real Smart Media for podcasting the responses. Finally, I am grateful to Steven Galvin at *Film Ireland* for including the event details online and for promoting the symposium via Twitter. (Noreen Giffney, February 2016)

## Previous Related Events (podcasts available)

This event is a follow-up event to **Melancholia**, which Noreen Giffney co-organised, at the National Museum of Decorative Arts and History, Dublin in November 2014. Podcasts are available to listen to online:

[www.ucd.ie/humanities/events/podcasts/2014/melancholia/](http://www.ucd.ie/humanities/events/podcasts/2014/melancholia/)

This event is also a follow-up event to **Conducting Psychoanalytic Research for Publication**, which Noreen Giffney organised, in the Humanities Institute at University College Dublin in February 2015. Podcasts are available to listen to online:

[www.ucd.ie/humanities/events/podcasts/2015/conducting-psychoanalytic-research-for-publication/](http://www.ucd.ie/humanities/events/podcasts/2015/conducting-psychoanalytic-research-for-publication/)

The Irish Forum for Psychoanalytic Psychotherapy co-sponsored both of these earlier events.



Psychoanalytic Psychotherapy Clinic



Trinity  
College  
Dublin

The University of Dublin

20.11.15-21.02.16  
**TRAUMA**  
BUILT TO BREAK



## Resources for Individuals Affected by Traumatic Experiences

- One in Four: [www.oneinfour.ie](http://www.oneinfour.ie)
- Dublin Rape Crisis Centre: [www.drcc.ie](http://www.drcc.ie)
- Women's Aid: [www.womensaid.ie](http://www.womensaid.ie)
- Spirasi: <http://spirasi.ie>
- Console: <http://console.ie>
- Safe Ireland: [www.safeireland.ie](http://www.safeireland.ie)
- Advocates for Victims of Homicide (AdVIC): [www.advic.ie](http://www.advic.ie)
- LGBT Helpline: [www.lgbt.ie](http://www.lgbt.ie)
- Amnesty International: [www.amnesty.ie](http://www.amnesty.ie)
- BeLonG To Youth Services: [www.belongto.org](http://www.belongto.org)
- Connect: <http://connectcounselling.ie>
- HSE National Counselling Service: [www.hse.ie](http://www.hse.ie)
- Barnardos: [www.barnardos.ie](http://www.barnardos.ie)
- Federation for Victim Assistance: [www.victimassistanceireland.com](http://www.victimassistanceireland.com)
- Pavee Point Traveller and Roma Centre: [www.paveepoint.ie](http://www.paveepoint.ie)
- Gay Switchboard Ireland: <http://gayswitchboard.ie>
- CARI Foundation: [www.cari.ie](http://www.cari.ie)
- Rape Crisis Help: [www.rapecrisishelp.ie/how-we-can-help](http://www.rapecrisishelp.ie/how-we-can-help)
- COSC: [www.cosc.ie](http://www.cosc.ie)
- Suicide Prevention: <http://suicideprevention.ie>
- Transgender Equality Network Ireland: [www.teni.ie](http://www.teni.ie)
- Rape Crisis Network Ireland: [www.rcni.ie](http://www.rcni.ie)
- Exchange House Ireland: National Travellers Service: [www.exchangehouse.ie](http://www.exchangehouse.ie)
- Childline: [www.childline.ie](http://www.childline.ie)
- Towards Healing: [www.towardshealing.ie](http://www.towardshealing.ie)
- ISPCC: [www.ispcc.ie](http://www.ispcc.ie)
- Amnesty International: [www.amnesty.ie](http://www.amnesty.ie)
- Samaritans: [www.samaritans.org](http://www.samaritans.org)

## Accredited Psychotherapists

This symposium is co-sponsored by the Irish Forum for Psychoanalytic Psychotherapy (IFPP), which is a member of the Psychoanalytic Section of the Irish Council for Psychotherapy (ICP), which in turn is a member of the European Association for Psychotherapy (EAP).

- Irish Forum for Psychoanalytic Psychotherapy (IFPP): [www.ifpp.ie](http://www.ifpp.ie)
- Irish Council for Psychotherapy (ICP): [www.psychotherapy-ireland.com](http://www.psychotherapy-ireland.com)



Psychoanalytic Psychotherapy Clinic



The University of Dublin

20.11.15-21.02.16  
**TRAUMA**  
BUILT TO BREAK



## Upcoming Events, and Invitations to Collaborate on Projects and Events

Visit the following websites for details of upcoming events:



Psychoanalytic Psychotherapy Clinic

- **Psychoanalysis +**

Web: [www.psychoanalyticpsychotherapyclinic.ie/psychoanalysis](http://www.psychoanalyticpsychotherapyclinic.ie/psychoanalysis)

Dr Noreen Giffney is interested in interdisciplinary collaborations (clinical, academic, artistic), especially collaborations that focus on bringing psychoanalysis into creative and productive dialogue with other disciplines and creative practices around psychosocial or psycho-cultural issues. Please get in touch if you have ideas for events and/or are interested in co-organising something as part of the series: [noreen.giffney@gmail.com](mailto:noreen.giffney@gmail.com)



- **Irish Forum for Psychoanalytic Psychotherapy**

Web: [www.ifpp.ie](http://www.ifpp.ie)

Mindfulness in Psychoanalytic Practice: A Series of Clinical Workshops with Dr Michael (Michelo) DelMonte. Further details from the IFPP's Administrator Ann Daly: [amdpsy@gmail.com](mailto:amdpsy@gmail.com)



- **Science Gallery Dublin**

Web: <https://dublin.sciencegallery.com/>

Upcoming exhibitions for 2016 include Field Test (11 March-5 June), Seeing: More Than Just Looking (24 June-18 September) and Design and Violence: A Co-Production with MOMA New York (7 October-15 January 2017).



- **Optical Kink**

Email: [jahealy@tcd.ie](mailto:jahealy@tcd.ie)

Optical Kink is the curatorial practice of artist, researcher, arts project manager and trainee psychoanalytic psychotherapist Janet Healy. She welcomes contact from artists, curators, arts/cultural organisations and psychoanalytic practitioners who are interested in discussing and initiating projects.